



**GREATER  
DENVER  
TRANSIT**

[www.greaterdenvertransit.com](http://www.greaterdenvertransit.com)



Please sign up  
for our email list.

## Agenda

- 6:00pm Doors Open
- 6:30pm Meeting Start
- 6:32pm The News
- 6:40pm Events & Projects
- 6:55pm Legislative Briefing
- 7:15pm Lance Longenbohn
- 8:00pm Transit Orientated  
Drinks

# Monthly Meeting

**May 23rd, 2024**

Office of Governor Jared Polis



# The News

# RTD Light Rail Projects



**“We don’t have the staff for that.”**  
- Debra Johnson on reconstructing the Downtown Light Rail Loop in one go.

## **Coping Panels Project**

**Tue May 28th to Sat Sep 14th**

**7am - 7pm Mon-Sat working**

**Single tracking**

**60min frequencies on E and H Lines**

**No relief bus service**

## **Downtown Light Rail Reconstruction Project**

**Phase 1 - 5x grade crossings**

**Tue May 28th to September.**

**All D & H Line trains to Union Stn**

**L Line suspended**

# RTD May 2024 Service Changes



Light rail midweek service cuts walked back by staff.

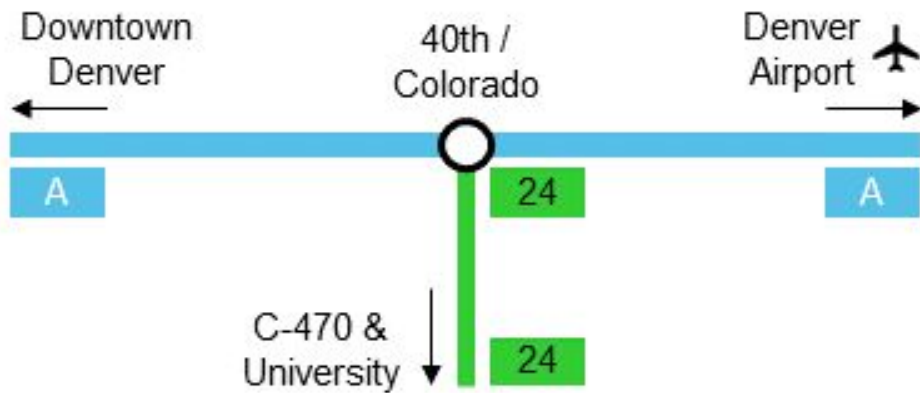
“Routine schedule adjustments” all too often means ruined connections.

Incidents shows why the service planning & scheduling process needs overhaul.

# Connection Analysis



A connection analysis shows the exact issues.



## 40th & Colorado Station - A Line to Route 24

Transfer Time	0:03
Crossing Tracks	0:01
Walking Distance	0:00
<b>Connection Time</b>	<b>0:04</b>

Inbound			Outbound					
A Line Eastbound Arrival	A Line Westbound Arrival	A Line Assessed Arrival	Route 24 Southbound Departure (Current)	Connection Analysis	Route 24 Southbound Departure (RTD Proposed)	Connection Analysis	Route 24 Southbound Departure (GDT Proposed)	Connection Analysis
3:09		3:09						
3:54		3:54						
4:24		4:24						
4:39	4:38	4:39						
4:54		4:54						
5:09	5:08	5:09	5:11	0:02	5:11	0:02	5:13	0:04
5:24		5:24						
5:39	5:38	5:39						
5:54	5:53	5:54						
6:09	6:08	6:09	6:11	0:02	6:11	0:02	6:13	0:04
6:24	6:23	6:24						
6:39	6:38	6:39						
6:54	6:53	6:54						
7:09	7:08	7:09	7:09	0:00	7:07	MISS	7:13	0:04
7:24	7:23	7:24						
7:39	7:38	7:39	7:44	0:05				
7:54	7:53	7:54						
8:09	8:08	8:09	8:09	0:00	8:07	MISS	8:13	0:04
8:24	8:23	8:24						
8:39	8:38	8:39						
8:54	8:53	8:54						
9:09	9:08	9:09	9:10	0:01	9:08	MISS	9:13	0:04
9:24	9:23	9:24						
9:39	9:38	9:39						
9:54	9:53	9:54						
10:09	10:08	10:09	10:10	0:01	10:08	MISS	10:13	0:04
10:24	10:23	10:24						
10:39	10:38	10:39						
10:54	10:53	10:54						
11:09	11:08	11:09	11:10	0:01	11:08	MISS	11:13	0:04
11:24	11:23	11:24						
11:39	11:38	11:39						
11:54	11:53	11:54						
12:09	12:08	12:09	12:10	0:01	12:06	MISS	12:13	0:04
12:24	12:23	12:24						
12:39	12:38	12:39						
12:54	12:53	12:54						
13:09	13:08	13:09	13:10	0:01	13:06	MISS	13:13	0:04
13:24	13:23	13:24						
13:39	13:38	13:39						
13:54	13:53	13:54						
14:09	14:08	14:09	14:10	0:01	14:06	MISS	14:13	0:04
14:24	14:23	14:24						
14:39	14:38	14:39						
14:54	14:53	14:54						
15:09	15:08	15:09	15:08	MISS	15:02	0:08	15:13	0:04
15:24	15:23	15:24						
15:39	15:38	15:39						
15:54	15:53	15:54						
16:09	16:08	16:09	16:08	MISS	16:02	0:08	16:13	0:04
16:24	16:23	16:24						
16:39	16:38	16:39						
16:54	16:53	16:54						
17:09	17:08	17:09	17:06	MISS	17:00	0:06	17:13	0:04
17:24	17:23	17:24						

# Board Candidates!



**There are now 12 candidates running in A, D, E, F, H, and M! G and I are still TBD.**

**We will work to send out questionnaires to get their positions!**

**Help our GDT-endorsed candidates get the word out!**

# FRPR Ballot Measure to be pushed to 2026?



## Front Range rail leaders want to wait until 2026 to ask voters for funding

By Nathaniel Minor · May. 21, 2024, 5:11 pm



Nathaniel Minor/CPR News

It seems like there's FRPR District Board support to go to 2026!

We need YOUR help at public comment to stick the landing!

Public comment on **May 31st!** Talk to James or Leslie to get looped in!



# Events

HELLO  
My name is  
Matt





# Ride-Alongs!



Will start planning summer ones soon - no free fare this year.

First one - take the (last) L! May 25th

Let us know your ideas for ride-alongs!

# “Last Night on the L” Event



*One more ride* before  
the tracks go quiet.

Meet us at **7pm**  
**Pairadice Bar**  
**Welton St.**

Be kind, help us clean  
up at the end!

**STATION  
TEMPORARILY  
CLOSED**

NO RAIL SERVICE STARTING  
**MAY 26**

ESTACIÓN CERRADA  
TEMPORALMENTE  
NO HABRÁ SERVICIO FERROVIARIO  
A PARTIR DEL 26 DE MAYO



# RTD Board of Directors Meeting



**RTD** Peak Service Study  
Northwest Rail  
**Feasibility Study Update**  
Board of Directors  
May 18, 2025

**Item XVI.2 - Discussion Item**  
XVI. General Manager's Report  
XVI.1. Executive Summary  
XVI.2. Action Item Update  
Northwest Rail Peak Service Feasibility Study Update  
XVI.1. Executive Summary  
A. 2025 - 2030 Year Construction Model Review and Annual 2025 Performance Assessment  
B. 2025 - 2030 Year Construction Model Review and Annual 2025 Performance Assessment  
C. 2025 - 2030 Year Construction Model Review and Annual 2025 Performance Assessment  
D. 2025 - 2030 Year Construction Model Review and Annual 2025 Performance Assessment  
E. 2025 - 2030 Year Construction Model Review and Annual 2025 Performance Assessment  
F. 2025 - 2030 Year Construction Model Review and Annual 2025 Performance Assessment  
G. 2025 - 2030 Year Construction Model Review and Annual 2025 Performance Assessment  
H. 2025 - 2030 Year Construction Model Review and Annual 2025 Performance Assessment  
I. 2025 - 2030 Year Construction Model Review and Annual 2025 Performance Assessment  
J. 2025 - 2030 Year Construction Model Review and Annual 2025 Performance Assessment  
K. 2025 - 2030 Year Construction Model Review and Annual 2025 Performance Assessment  
L. 2025 - 2030 Year Construction Model Review and Annual 2025 Performance Assessment  
M. 2025 - 2030 Year Construction Model Review and Annual 2025 Performance Assessment  
N. 2025 - 2030 Year Construction Model Review and Annual 2025 Performance Assessment  
O. 2025 - 2030 Year Construction Model Review and Annual 2025 Performance Assessment  
P. 2025 - 2030 Year Construction Model Review and Annual 2025 Performance Assessment  
Q. 2025 - 2030 Year Construction Model Review and Annual 2025 Performance Assessment  
R. 2025 - 2030 Year Construction Model Review and Annual 2025 Performance Assessment  
S. 2025 - 2030 Year Construction Model Review and Annual 2025 Performance Assessment  
T. 2025 - 2030 Year Construction Model Review and Annual 2025 Performance Assessment  
U. 2025 - 2030 Year Construction Model Review and Annual 2025 Performance Assessment  
V. 2025 - 2030 Year Construction Model Review and Annual 2025 Performance Assessment  
W. 2025 - 2030 Year Construction Model Review and Annual 2025 Performance Assessment  
X. 2025 - 2030 Year Construction Model Review and Annual 2025 Performance Assessment  
Y. 2025 - 2030 Year Construction Model Review and Annual 2025 Performance Assessment  
Z. 2025 - 2030 Year Construction Model Review and Annual 2025 Performance Assessment

Next board meeting:  
**Tues May 28th**

With recent legislation passed, what should the board do next?

Essential opportunity to comment!

# ColoRail Meeting



9am Sat Jun 1st

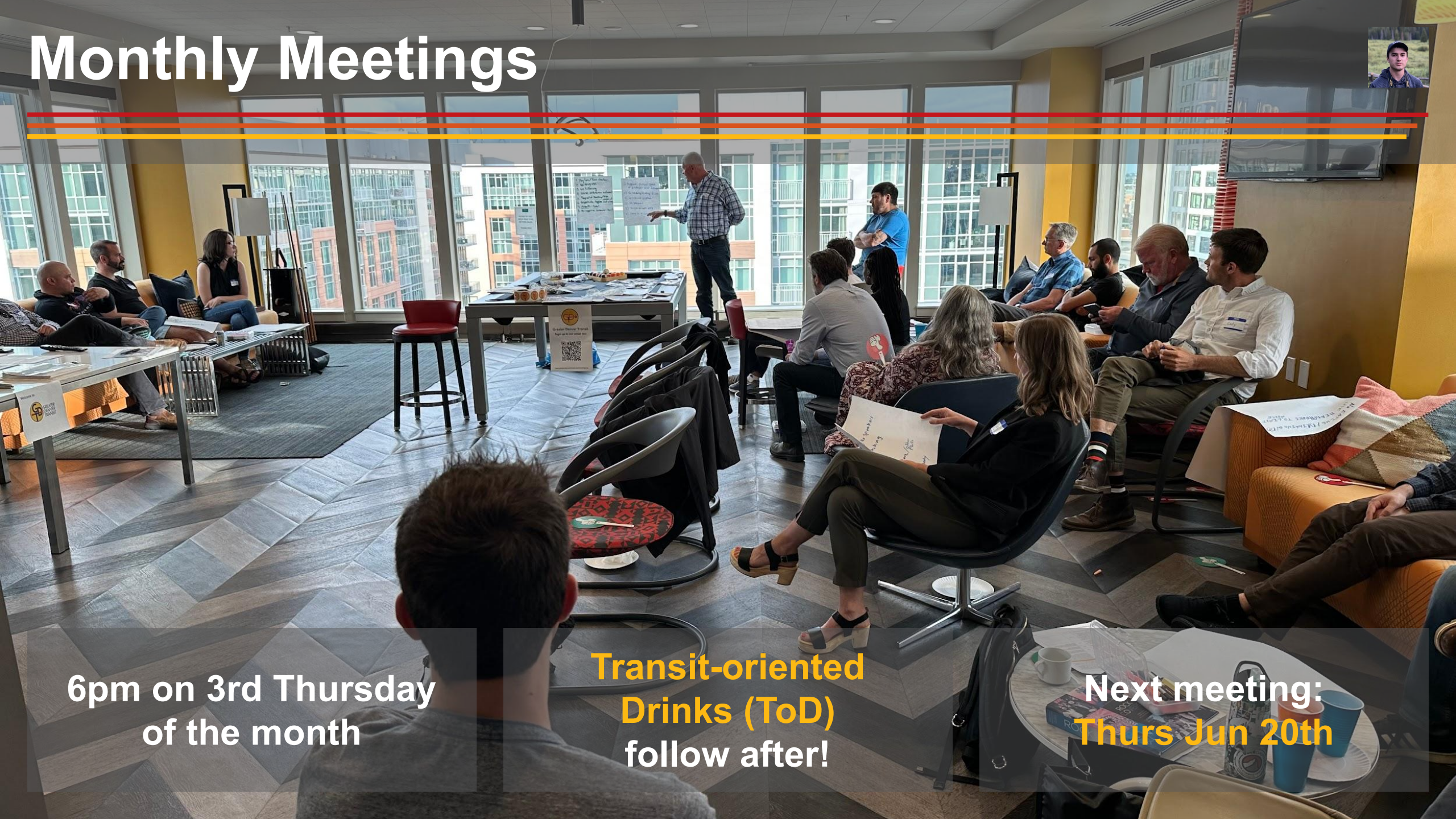
Take the FF1 + HOP to  
the Hyatt Place  
Boulder / Pearl St

2280 Junction Pl.,  
Boulder, CO 80301

# Monthly Meetings

---

---



6pm on 3rd Thursday  
of the month

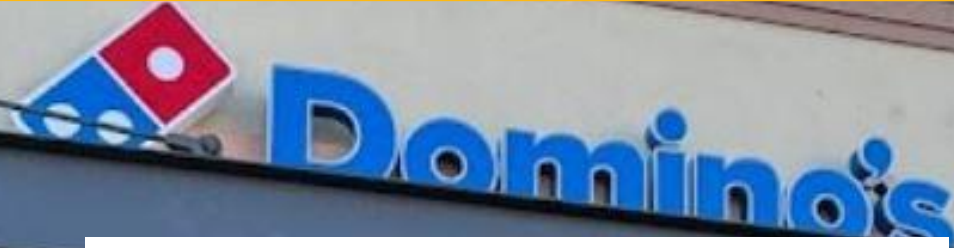
Transit-oriented  
Drinks (ToD)  
follow after!

Next meeting:  
Thurs Jun 20th

# Pizza Fund

---

---



***venmo***

\$2 for each piece of pizza.

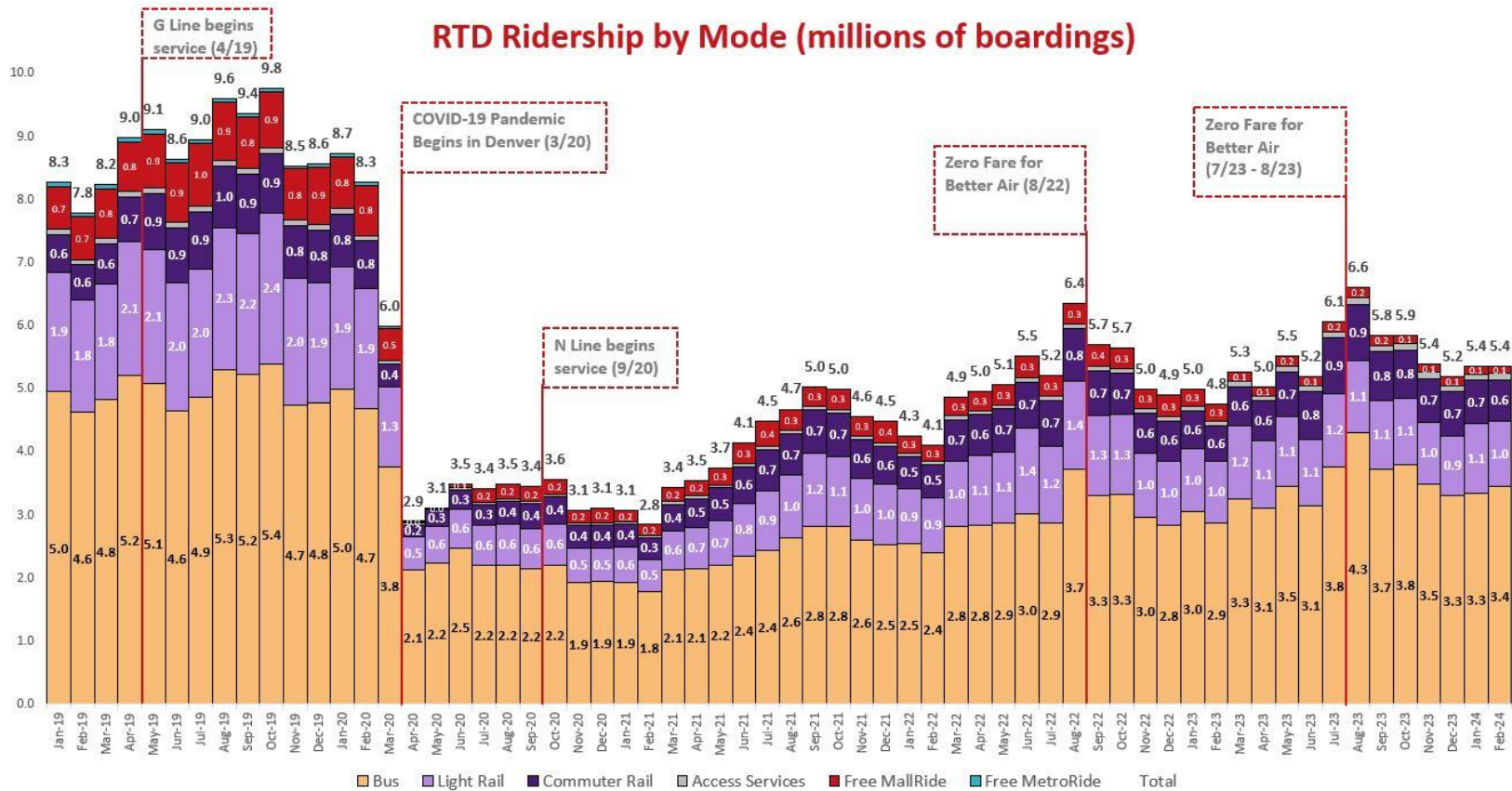




# Projects



# RTD Ridership Analysis - Feb 2024



**YoY % Growth \***

**Bus: +15% YoY**

**Light Rail: +1% YoY**

**Heavy Rail: +10% YoY**

\* Growth rates adjusted for equalized work week days on a year-over-year basis

**Feb 2019**  
**7.8m riders**

**Feb 2021**  
**2.8m riders**

**Feb 2024**  
**5.4m riders**



# RTD Operator Shortage - Feb 2024



YoY Net Increase in Hiring\*:

Bus: **+59 People**

Light Rail: **+0 People**

Total: **+49 People**

\*YoY Increase (decrease) includes Full Time + Part Time operators presented net of attrition (voluntary & involuntary)

Bus: **136 Vacancies**  
816 vs. 952 Budget

Light Rail: **43 Vacancies**  
159 vs. 202 Budget

Bus+LRT: **179 Vacancies**  
975 vs. 1,154

# Reimagine RTD (GDT's Version)



## Aim

Simplify and separate asks based on RTD Owner.


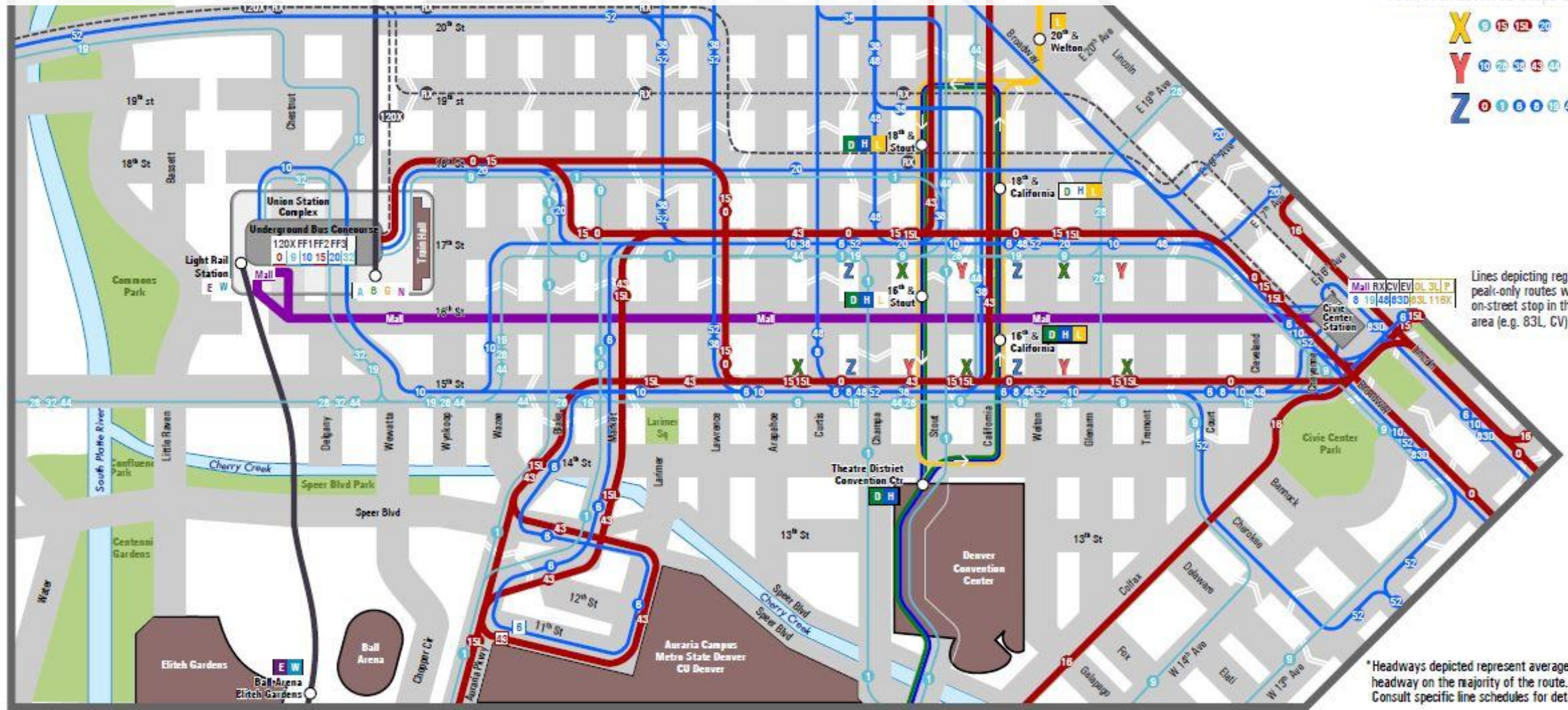
## Method

Roll up key ideas into a vision, but have removable pieces that can be focused on.

# Downtown Denver Bus Service - Existing

**Bus Services**

- Every 10-15
- Every 20-30
- Every 60 min
- Peak Only

**15th/17th Lettered Stops By Route**

<b>X</b>	9, 15, 15L, 20
<b>Y</b>	10, 20, 30, 43, 44
<b>Z</b>	0, 1, 8, 9, 18, 48, 52

Lines depicting regional and peak-only routes without an on-street stop in the downtown area (e.g. 83L, CV) are not shown

\*Headways depicted represent average midday headway on the majority of the route. Consult specific line schedules for details.

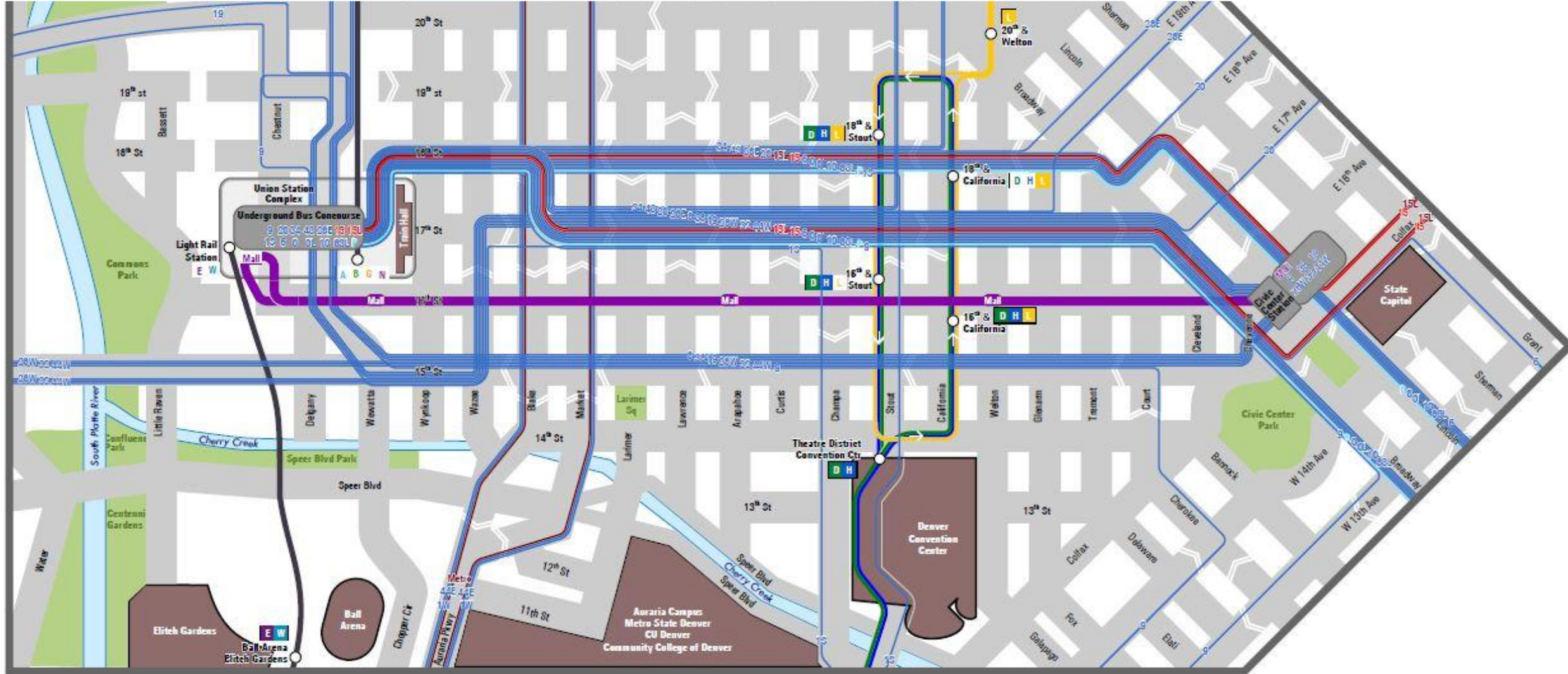

# Downtown Denver Bus Service - GDT Plan

Rail Services

- 15 min
- Every 30 min

Bus Service

- Every 15 min
- Every 30 min
- Every 15 min
- Hourly



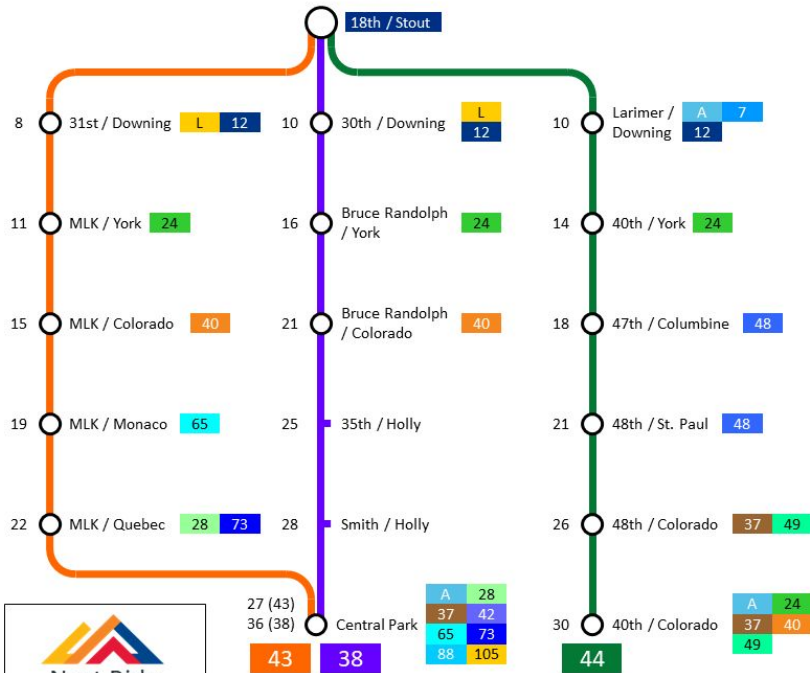
# Information Overhaul - Bus Stop Signs



## 18th / Stout



Stop #17761



### Eastbound Buses From This Stop

Route	Name	Frequency in Minutes		
		Weekdays	Weekends	Evenings
38 Local	West 38th Avenue	30	30	30
43 Local	Martin Luther King Blvd	15	15	30
44 Local	44th Avenue	60	60	60

17761 / Map

May 2024

Here's a preview of some of our concepts for revamped maps and schedule information.

Feedback requested, concepts are being shared with stakeholders and RTD.

## 31st / Downing



Stop #34707

43 Local

### Martin Luther King Blvd

#### Monday - Friday Eastbound Schedule

First Buses	7am to 9am	9am to 3pm	3pm to 9pm	Last Buses
4:30am	7:00am		3:12pm	5:42pm
5:00am	7:15am		3:27pm	5:57pm
5:30am	7:30am		3:42pm	6:29pm
6:00am	7:45am	At these 13 minutes	3:57pm	6:59pm
6:30am	8:00am	past the 28	4:12pm	7:29pm
6:45am	8:15am	hour: 43	4:27pm	8:00pm
	8:30am	hour: 58	4:42pm	8:30pm
	8:43am		4:57pm	12:30am
	8:58am		5:12pm	1:30am
			5:27pm	

#### Saturday Eastbound Schedule

First Buses	7am to 9am	9am to 6pm	6pm to 9pm	Last Buses
4:30am	7:00am		6:28pm	9:00pm
5:00am	7:15am		6:58pm	9:30pm
5:30am	7:30am		7:28pm	10:00pm
6:00am	7:45am	At these 13 minutes	7:58pm	10:30pm
6:30am	8:00am	past the 28	8:30pm	11:00pm
6:45am	8:15am	hour: 43		11:30pm
	8:30am	hour: 58		12:00am
	8:45am			12:30am
	8:58am			1:30am

#### Sunday / Holiday Eastbound Schedule

First Buses	8am to 11am	11am to 6pm	6pm to 9pm	Last Buses
4:30am	8:00am		6:28pm	9:00pm
5:00am	8:15am		6:58pm	9:30pm
5:30am	8:30am		7:28pm	10:00pm
6:00am	8:58am	At these 13 minutes	7:58pm	10:30pm
6:30am	9:28am	past the 28	8:30pm	11:00pm
7:00am	9:58am	hour: 43		11:30pm
7:30am	10:28am	hour: 58		12:00am
	10:43am			12:30am
	10:58am			1:30am

34707 / 43

May 2024



Next Ride  
Scan here for next departure:



Next Ride  
Scan here for next departure:



# Legislative Session Recap!

# Record Funding for Mass Transit



## **SB24-184 Surface Transportation Infra. Development**

**\$60 million** from new rental car fees to go to intercity rail and Bustang

**Unlocks ~\$130 million** previously exclusively used for road projects

## **SB24-032 Methods to Increase the Use of Transit**

**Creates statewide transit pass exploratory committee**

**Free Fare for Youth for RTD, either Free Fare for Ozone or Youth for other transit agencies**

## **SB24-230 Oil & Gas Production Fees**

**\$100-\$180 million** in oil and gas fees to mass transit

**70% operations**  
**10% competitive grants**  
**20% passenger rail**

# Changes for RTD



**SB24-032** Methods to Increase the Use of Transit, **SB24-230** Oil & Gas Production Fees, **SB24-184** Surface Transportation Infra. Development, **SB24-214** Implement State Climate Goals, **SB24-195** Protect Vulnerable Road Users

Free Fare for Youth will be continuing with funding support from the state

\$60-\$110 million in annual funding support from state by 2026

RTD must submit report describing how they will finish NW Rail and the N line extension by 2034, and must prioritize the completion of those lines

Must submit an implementation plan by September 30 alongside FRPR, CTIO, and CDOT to initiate FRPR starter service along NW corridor by 2029

Has the authority to dispose of property for below market value

Increased flexibility to use bus lane enforcement cameras

Budget transparency requirements, capital projects status and funding dashboard and update, ridership and service reliability dashboard, workforce statistics dashboard, and service changes dashboard.



# Other Rail Transit Changes

---

---



**SB24-190** Rail & Coal  
Transition Community  
& Economic Measures

**HB24-1012** Front  
Range Passenger Rail  
District Efficiency

**HB24-1030**  
Railroad Safety  
Requirements

# Transit Friendly Land Use



## **HB24-1152**

**Accessory Dwelling  
Units**

## **SB24-195**

**Protect Vulnerable  
Road Users**

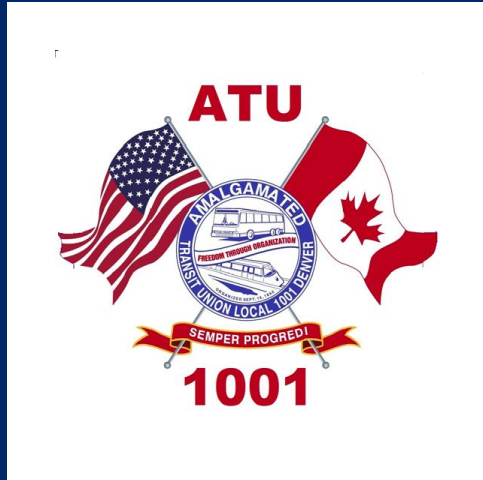
## **HB24-1304**

**Minimum Parking  
Requirements**

## **SB24-174**

**Sustainable Affordable  
Housing Assistance**

**HB24-1313 Housing in  
Transit-Oriented  
Communities**



**Lance  
Longenbohn**

**ATU 1001 President and  
Business Agent**





**\$167k**

**\$280k**

**\$233k**

**\$246k**

**\$280k**

**\$12k**

**\$12k**

**\$395k**

**\$12k**

**\$12k**

**15th Street**  
↑ Colo. Convention Cntr.  
↑ Light Rail  
← Civic Center Park  
→ Skyline Park

**ONE WAY**





Please sign up  
for our email list.



**GREATER  
DENVER  
TRANSIT**

[www.greaterdenvertransit.com](http://www.greaterdenvertransit.com)

# Thank You!

**Transit adventure starts now!**