



www.greaterdenvertransit.com

Greater Denver Transit Monthly Meeting

May 18th, 2023





The News

RTD Light Rail “Annus Horribilis”

**Derailment in Aurora,
R Line to A Line
Connection Broken.**

Derailment in Golden.

**Southbound E to D
connection at I-25 &
Broadway is broken.**

**Drug and security
issues.**

**Major service
disruption on E, H,
and R Lines.**

**Keep sharing your
stories!**



ColoRail Meeting - Sat May 6th

The Union Station Problem: Freight Traffic.
FRPR MUST NOT share freight track here!

- Unreliability**
Amtrak trains that share tracks with freight traffic experience chronic delays.
- Low Frequency**
Shared freight corridors tend to allow fewer than 6 passenger trains / day.
- Low Support**
A poor service undermines public appetite for other transit projects.

GDT presented FRPR
‘Heavy Rail Upgrade’.

Response strongly
positive!



RTD Fare Study

Current Fares

	LOCAL	REGIONAL	AIRPORT
3-HOUR	\$3.00	\$5.25	\$10.50
DAY	\$6.00	\$10.50	
MONTHLY	\$114.00	\$200.00	

Proposed Fares


	STANDARD (LOCAL/REGIONAL)	AIRPORT (A LINE/SKYRIDE)
3-HOUR	\$2.75	\$10.00
DAY	\$5.50	
MONTHLY	\$88.00	

Proposed fare structure out for public comment.

GDT broadly in support.

Public comment ends on proposed fares **Mon May 22nd.**

ATTENTION 
 ALL TICKETS ARE VALID DATE OF PURCHASE ONLY
 AND EXPIRE AT TIME PRINTED ON EACH TICKET
 ONEWAY - (EXPIRE AFTER 3 HOURS)
 DAY PASS - (EXPIRE END OF TRANSIT DAY 2:59AM)

 **MOBILE TICKETING FOR DAY PASS IS HERE!**

INSERT YOUR CARD AS SHOWN. LEAVE FOR 2 SECONDS & THEN REMOVE.



1 Purchase Tickets 7:53AM
 2 Select a destination from the Stations
 Please touch

BILLS →

RTD Code of Conduct



Proposed Code of Conduct changes out for public comment.

GDT broadly in support, some clauses up for debate.

Public comment ends on proposed Code of Conduct **Fri Jun 2nd.**

RTD Board of Directors votes on Code of Conduct in June.

RTD Final May Service Changes

Late night service on **light rail** until 12am Mon-Thurs & Sun, 2am Fri & Sat.

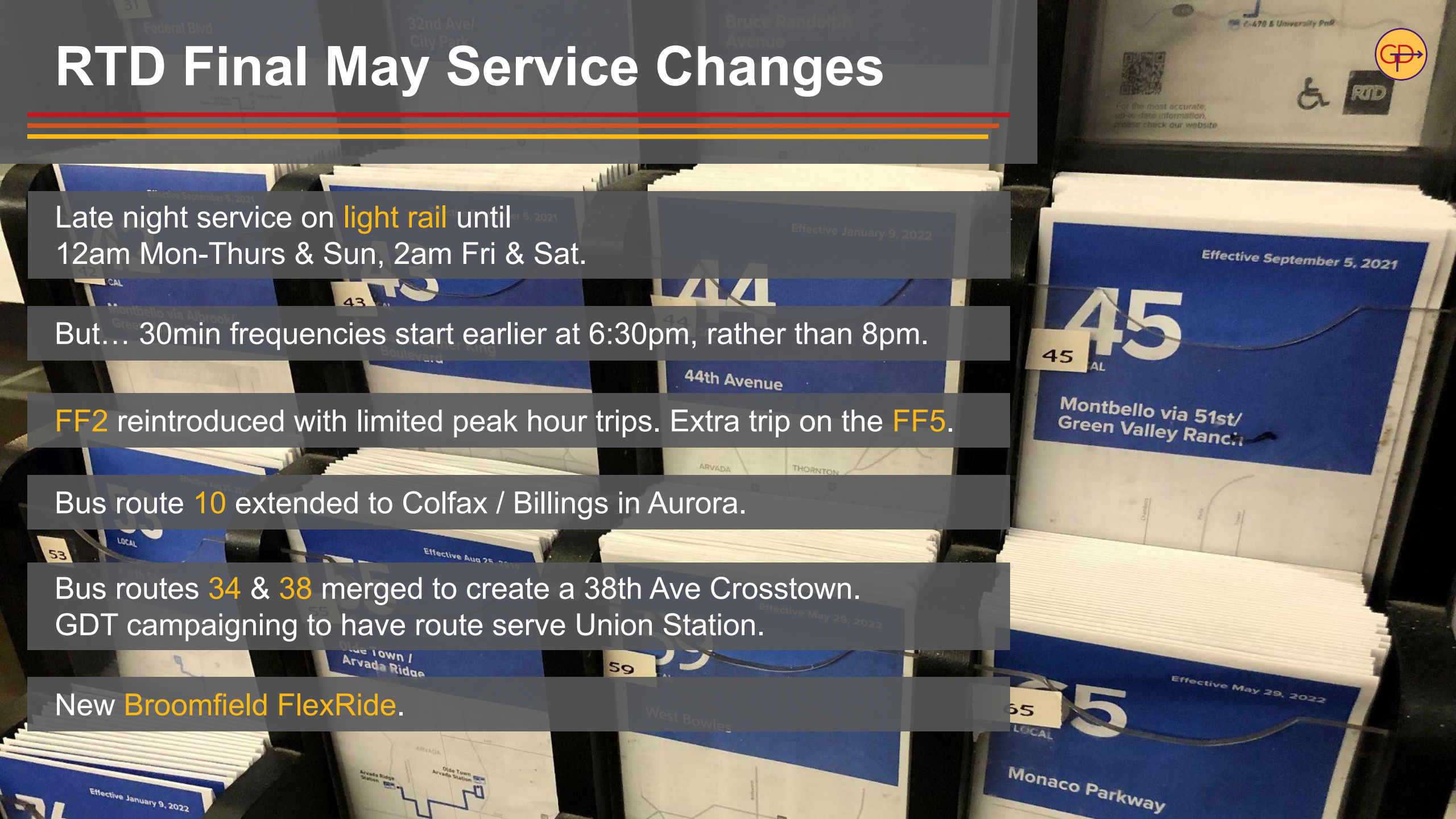
But... 30min frequencies start earlier at 6:30pm, rather than 8pm.

FF2 reintroduced with limited peak hour trips. Extra trip on the **FF5**.

Bus route **10** extended to Colfax / Billings in Aurora.

Bus routes **34** & **38** merged to create a 38th Ave Crosstown.
GDT campaigning to have route serve Union Station.

New **Broomfield FlexRide**.





Events

Monthly Meetings



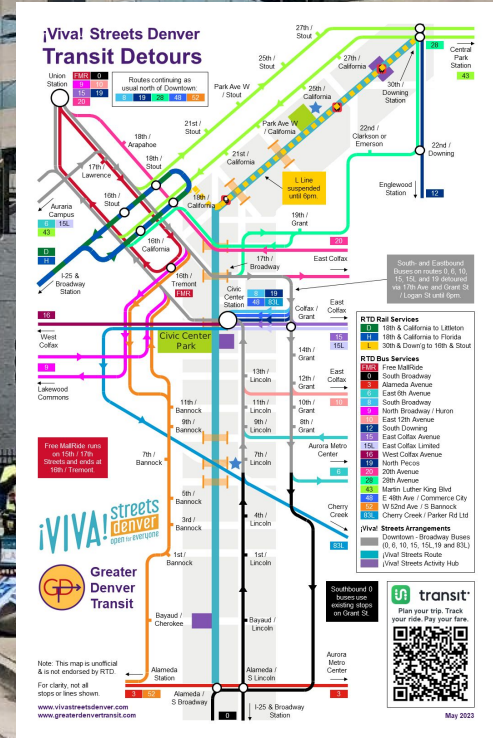
6pm on 3rd Thursday
of the month.

Dates scheduled up to
November.

Next meeting on
Thurs Jun 15th.

iViva! Streets

iVIVA! streets
denver
open for everyone



4 Summer Sundays:
**Jun 4th, Jul 9th,
Aug 6th**

8am - 2pm
GDT has table /
mobile rig.

Still pushing for L Line
to run during event.
RA process.

Streetcar Day (After ¡Viva! Streets)



**2pm Sun Jun 4th
(after ¡Viva! Streets)
Civic Center Park**

**Tour of notable
streetcar locations,
including depot.**

Drinks along the way!





ZERO FARE

We'll get you There

**RTD is free in
July & August!**

**Full program of events
including ride alongs
and two 'big days out'.**

**Collaborating with
other organizations.**

RTD (Zero Fare) Ride Alongs



1st Thursday of the month. Every week in July & August.

Meet at 6pm at Terminal Bar, Denver Union Station.

Next one is **Thurs Jun 1st.** ('Commerce City')

GDT Big Days Out

10am Sat Jul 22nd
Longmont and Fort Collins



10:30am Sat Aug 19th
Boulder and Nederland





Projects

Front Range Passenger Rail

Denver to Highlands Ranch
Heavy Rail Upgrade deck
published and presented to
ColoRail meeting.

FRPR District,
CDOT and RTD
meeting next week.



Downtown Bus Plan



Feedback generally positive!

Pursuing meeting with RTD Service Planning.



Bus Stop Survey



Website and bus stop report form now live.

109 out of 8,385 stops surveyed - **1.3%**.

Interest from RTD directors and city council members about surveying stops in their districts.



Trolleybus Campaign




Letter to RTD sent on
Fri May 12th.


RTD Responded on
Mon May 15th.

“In exploring all available options, the consultancy will certainly assess whether trolleybus technology is an appropriate fit for RTD.” - Debra Johnson

Mayoral Q&A



**Transit responses
received from both
candidates.**



**Publishing on website
tomorrow!**





C
H

Departures		5:30pm
C	West Seattle Alaska Junction	3 min
125	Westwood Village South Seattle College	9 min
H	Burien Transit Center Westwood Village	10 min

The RapidRide H Line will be rerouted in both directions off of SW 100th St between
Auraville Blvd SW and 69th Av SW beginning Sat Mar 18 due to the lack of traffic signals.
Riders may expect brief delays in transit service.

connectpoint (10-1b) Stop No. 1562 - Alaskan Way S & S Jackson St

www.greaterdenvertransit.com



Greater Denver Transit Bus Rapid Transit May 2023

Everyone is Talking About BRT!



BRT stands for 'Bus Rapid Transit'.

The 'in favor' transit technology in Denver and other U.S. cities.

Operating in locations such as Boston, Los Angeles, San Francisco, Albuquerque, Cleveland, Eugene, Kansas City, Omaha and Richmond.

The idea is to provide some of the amenities which make light rail quicker and easier to use...

...but with buses on existing streets.

Result should be cheaper.



Stations

BRT stations should offer a similar experience to light rail stations.

Lighting.

Shelter.

Electronic information display.

Security cameras.

Seating.

Map / schedule information.

Trash can.

Level boarding.



BRT Buses

BRT buses are very similar to regular transit buses.

Current RTD transit bus suppliers Gillig and New Flyer offer adaptations.

If right-hand boarding, any transit bus can in theory run on BRT infrastructure.



Buses may have extra doors or even doors on left side.



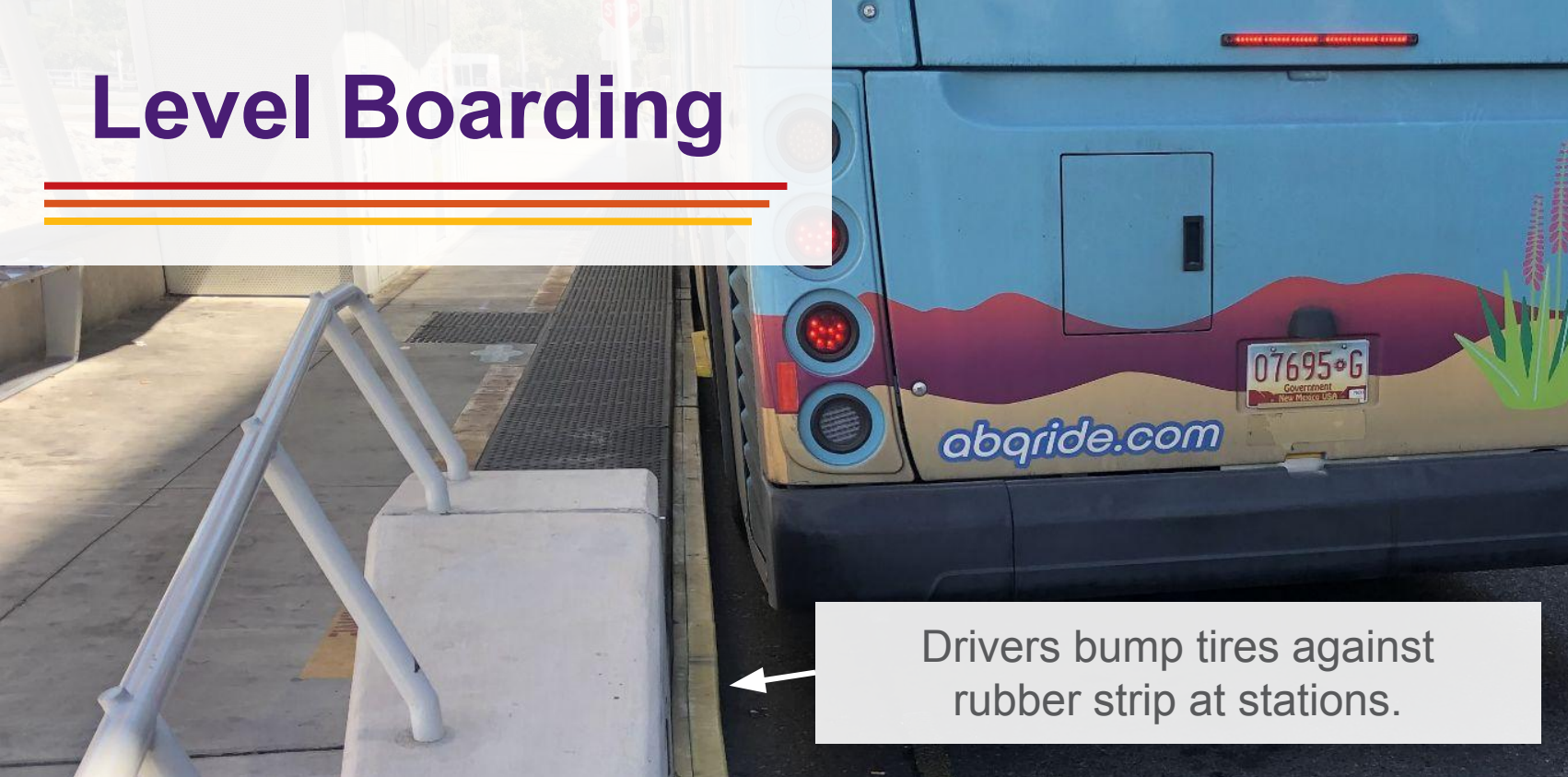
Bike space provided inside buses.



No front bike racks as dangerous for cyclists to step off BRT platforms to load / unload.



Level Boarding



Drivers bump tires against rubber strip at stations.



“BRT Mode” increases ride height when flashers are on and governs speed (e.g. 35mph).



Regular ADA ramp provided at front door.



Buses fitted with step extensions.



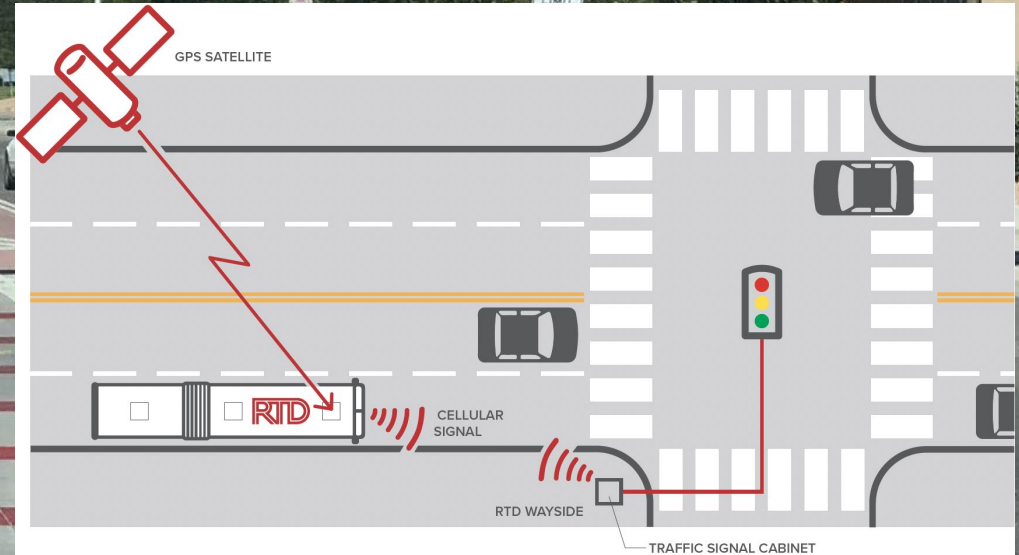
Rear and middle doors have driver operated ramps.

Transit Signal Priority

Transit Signal Priority (TSP) allows buses to get across intersections faster.



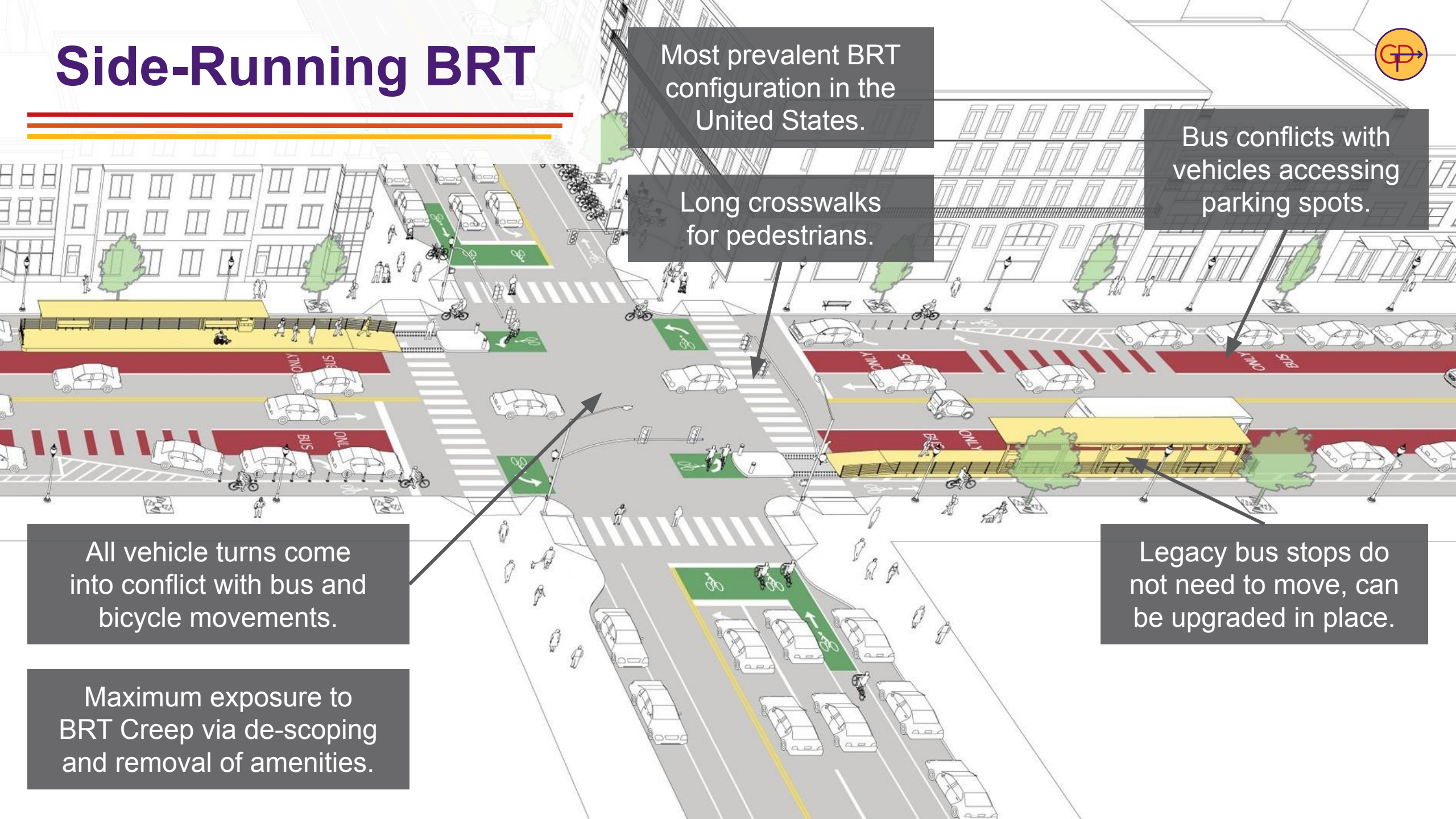
Buses have dedicated traffic signals.



Cell / GPS signal tells intersection controller bus is approaching intersection.



Side-Running BRT



Most prevalent BRT configuration in the United States.

Long crosswalks for pedestrians.

Bus conflicts with vehicles accessing parking spots.

All vehicle turns come into conflict with bus and bicycle movements.

Maximum exposure to BRT Creep via de-scoping and removal of amenities.

Legacy bus stops do not need to move, can be upgraded in place.

Center-Running BRT

Center-Running Bus Rapid Transit: How It Works

BRT lanes not blocked by parallel parking moves.

Riders must cross vehicle lanes to access transit

Right turns unaffected by BRT lanes.

Left turns either have dedicated traffic signal phase or prohibited.

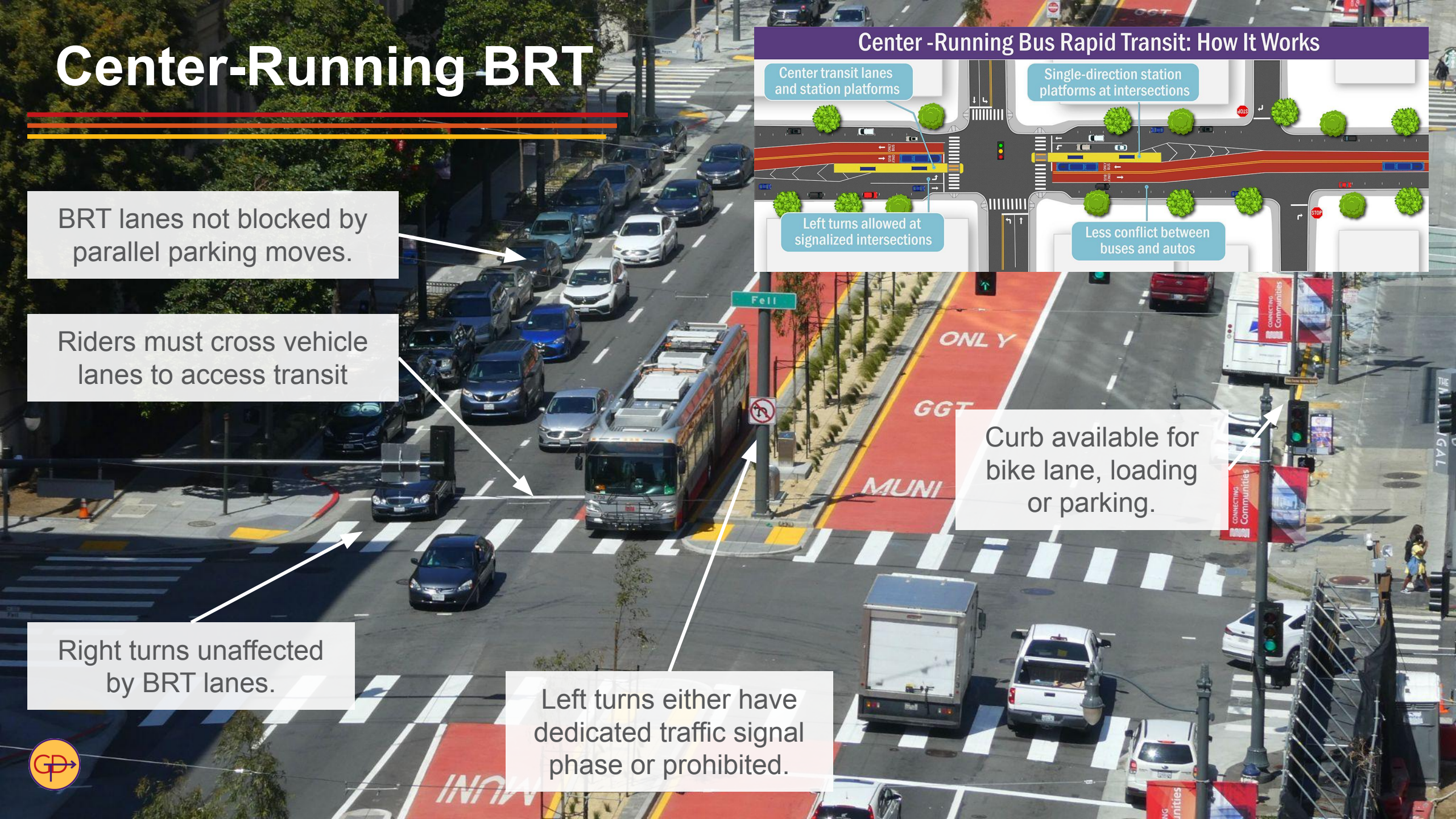
Curb available for bike lane, loading or parking.

Center transit lanes and station platforms

Single-direction station platforms at intersections

Left turns allowed at signalized intersections

Less conflict between buses and autos



Side Transitway

Only 50% of pedestrians need to cross the street to access transit.

Dedicated, straight-line, right-of-way for transit.

Reduced distance to cross the street.

Both right & left turns across the transitway would have to be tightly controlled.

Transitway shields cyclists and pedestrians from vehicle traffic and noise.



Denver's BRT Plans



Denver Moves Everyone 2050 says... “Accelerate the implementation of the BRT network identified in Denver Moves: Transit to provide faster, more reliable and frequent transit service throughout the city”.

Colfax BRT in final design phase, being progressed by DOTI.

Construction 2024-26, opening Jan 2027.

Short term plans calls for schemes on Colfax, Federal, Colorado, Speer and 38th Ave.

CDOT advancing Federal scheme.

GDT believes South Broadway and West Colfax (Broadway to Federal) BRT schemes should also be advanced.



Conclusions



BURNSVILLE
HEART OF
THE CITY

T METRO
Orange Line
to Minneapolis

BRT brings an appropriate transit upgrade up to a certain level of ridership.

BRT must as minimum feature dedicated lanes, transit signal priority, level boarding and off-board fare collection.

Look out for BRT projects being proposed because cost of light rail is 'prohibitive'.

Look out for BRT projects being 'watered down' - BRT Creep.

Show your support for the good BRT schemes!





Greater Denver Transit Thank You!

www.greaterdenvertransit.com

Stroad Diet Workshop



Break into groups, and you will be given cards with pens.

Make the case for why one of the three BRT modes is the best (we pick, you steelman it)

How easy is your mode to build? How safe is it?

Present your case, and we'll vote as a group for a preferred approach for Federal, Colorado, and 38th Ave.

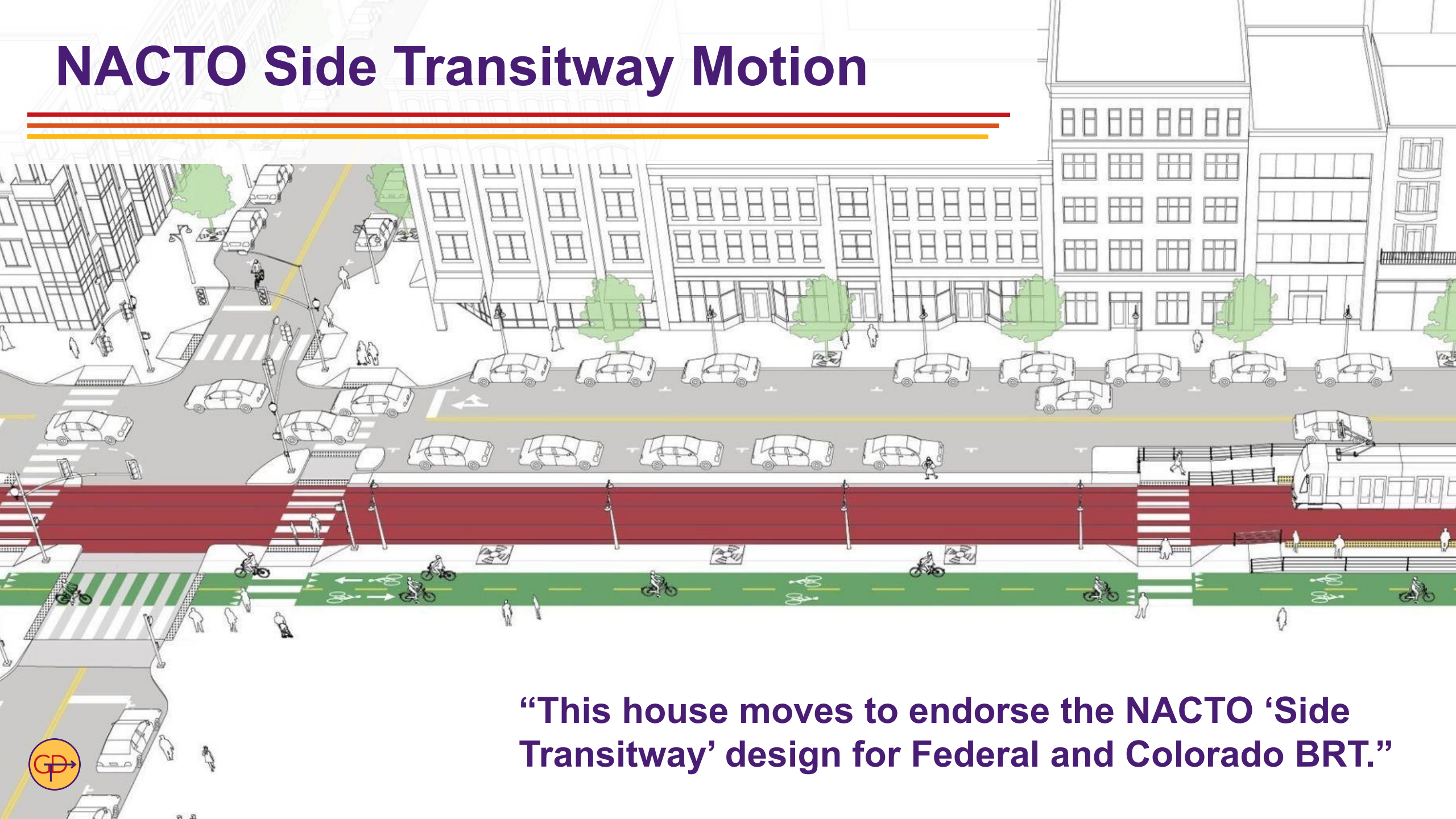




IN GOD WE TRUST

Motion

NACTO Side Transitway Motion



“This house moves to endorse the NACTO ‘Side Transitway’ design for Federal and Colorado BRT.”





www.greaterdenvertransit.com

Greater Denver Transit
Thank You!
Transit adventure starts at 8:30pm!

